



Tsutsubega Water Security Project (Phase 2)

Final Report – December 2023

A COLLABORATION BETWEEN



TSUTSUBEGA COMMUNITY - BACKGROUND

Africa Foundation has been active in Botswana since 2014, anchored by the andBeyond concessions in the Okavango Delta and working alongside the andBeyond Botswana team to support rural communities close to the world-famous tourist hotspot of the Okavango Delta.

Our work in Botswana is specifically linked to the andBeyond Xaranna, Xudum and Sandibe concessions, and their concessions in Chobe and Savuti. Our community focus is currently on the Tsutsubega, Gogomoga and Sexaxa communities.

These communities have limited access to infrastructure and education, which reduces their opportunities for employment and enterprise development. The households in these villages are reliant on subsistence farming and are under significant strain due to the drought conditions affecting their area, together with the impact of problem animals, notably elephants, that destroy crops during the dry season.

The Tsutsubega and Gogomoga communities are small, consisting of between 300-500 people. As a result, the communities are not officially eligible for Government services and infrastructure.

They are an hour and half drive from the road, along an informal track and across a small bridge created from branches and mud. There are no schools or shops, or power supply.



A COLLABORATION BETWEEN



30
YEARS

EMPOWERING COMMUNITIES
ENABLING CONSERVATION



TSUTSUBEGA - WATER SECURITY PROJECT - BACKGROUND

Prospects for employment in the area are non-existent and many of the young adults have left in search of work so that the villages consist mostly of elderly people and children. The primary sources of livelihood support are small-scale crop and livestock farming, and natural resource harvesting, including fish and grass. Rainfall is erratic and the stark reality is that without water crops cannot grow, and cattle and other livestock cannot survive. Desperate for water, residents rely upon unclean sources, causing water-borne illnesses which are commonly fatal for young children.

Critical to improving the lives and livelihoods of the people in the community is improving access to water.

At the request of the Tsutsubega and Gogomoga community leadership, Africa Foundation and &Beyond are supporting the establishment of a network of water points aimed at ensuring that every homestead has access to water

In 2022, we were able to support the establishment of a solar powered borehole system in the Gogomoga community, supported by the distribution of 50 Hippo Water Rollers.



A COLLABORATION BETWEEN



30
YEARS

EMPOWERING COMMUNITIES
ENABLING CONSERVATION



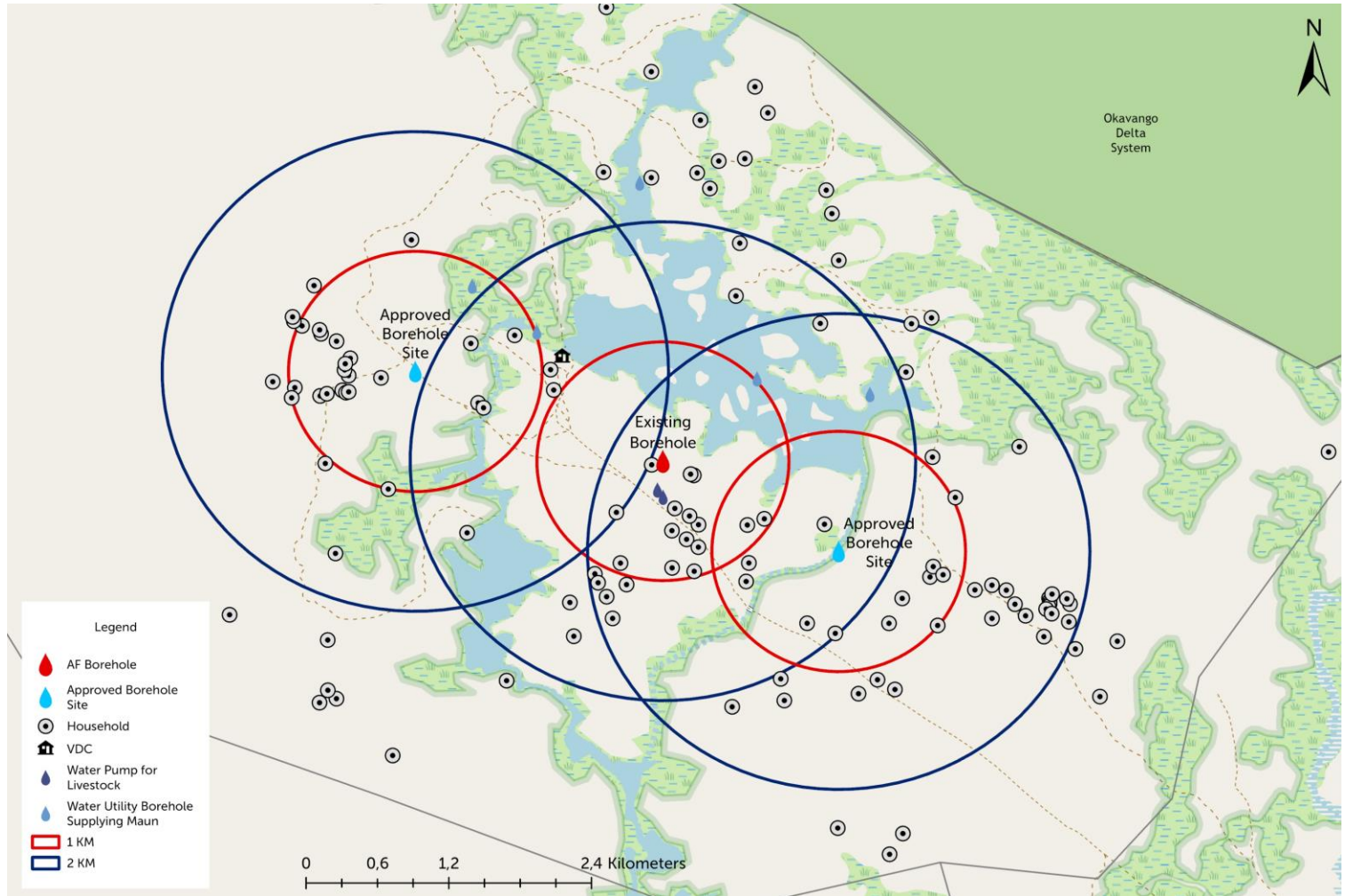
TSUTSUBEGA WATER SECURITY PROJECT (PHASE 2) – BOREHOLE SITES

To inform the placement, all Tsutsubega homesteads were mapped relative to the existing borehole and water systems. This was used to inform the water divining process, with the intention of finding 2 new borehole sites that would benefit as many homesteads as possible.

The map shows the position of the existing and new boreholes relative to the Tsutsubega homesteads – average of 11 residents per homestead.

- 48 homesteads are within 1 km of a borehole.
- 81 are within 1 – 2 km of a borehole.

The intention is to support the establishment of 3 to 4 more boreholes in Tsutsubega community, to ensure that all homesteads are within 2kms of a homestead.



TSUTSUBEGA WATER SECURITY PROJECT (PHASE 2) – PLANNING AND DRILLING



The identification of the 2 sites, where the new boreholes have been installed, was supported by a formal geo-science process, aimed at minimizing the chances of a drilling failure and maximizing the chances of establishing a sustainable high volume water supply point.



A COLLABORATION BETWEEN



30
YEARS

EMPOWERING COMMUNITIES
ENABLING CONSERVATION



TSUTSUBEGA WATER PROJECT (PHASE 2) – HANDOVER AND CELEBRATION

On the 13th November 2023, the Tsutsubega boreholes were handed over to the community - 1 solar powered and one fitted with a hand pump. 25 Hippo Water Rollers were also handed over, with another 25 to be distributed early in the New Year.

The Tsutsubega community arranged a fantastic handover ceremony to demonstrate their appreciation for this transformational investment, which was attended by

- the Village Development Committee,
- Political leaders (area Member of Parliament and Area Councillor),
- Government officials (Northwest District Council Chairman, Department of Water and Sanitation.
- Chief representatives from the nearby communities,
- &Beyond and Africa Foundation representatives,
- Royal Africa Foundation representatives,
- Botswana Television, the Okavango Express Newspaper and Radio Botswana.



A COLLABORATION BETWEEN

AFRICA
FOUNDATION

& BEYOND

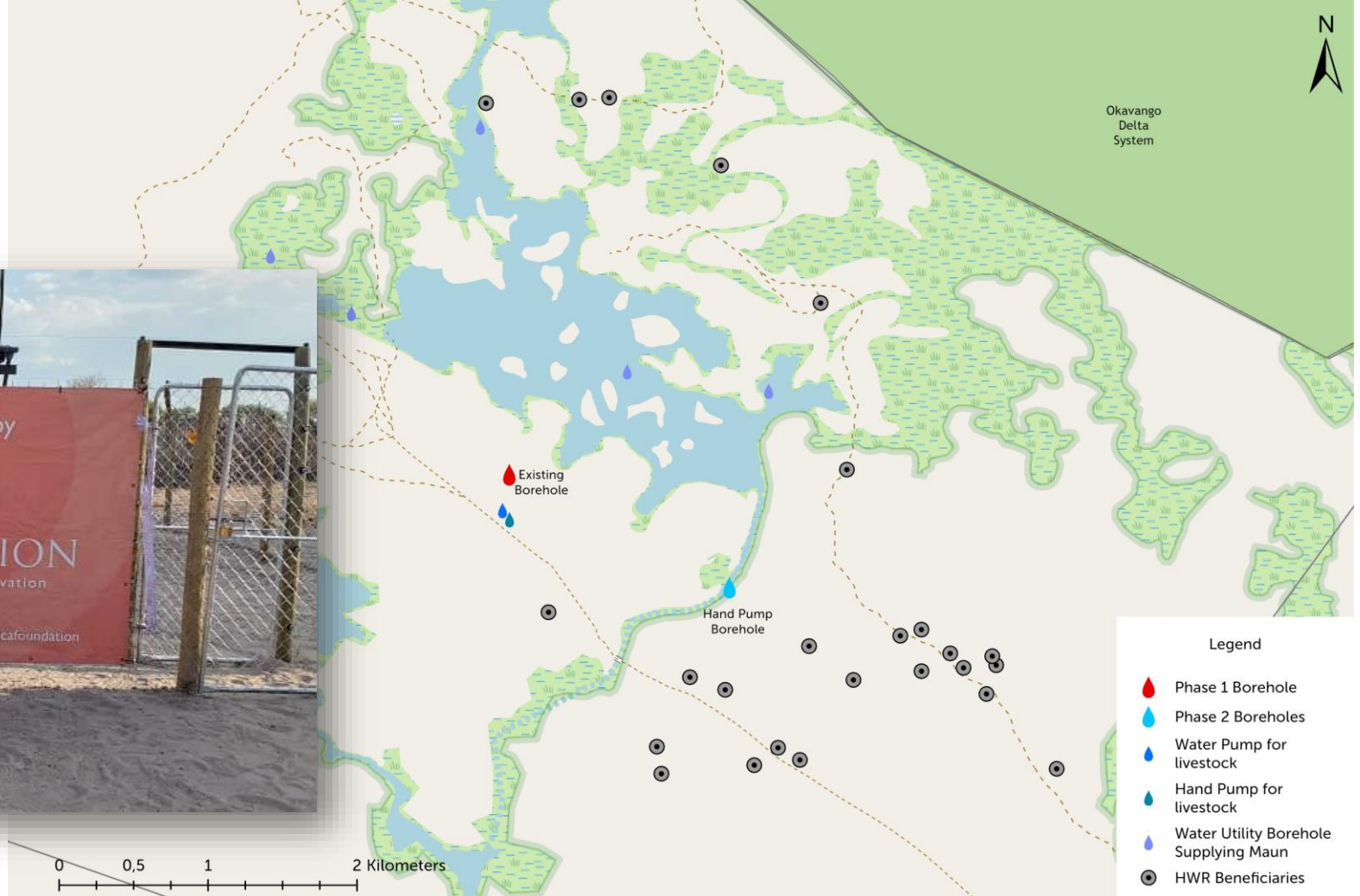
30
YEARS

EMPOWERING COMMUNITIES
ENABLING CONSERVATION



TSUTSUBEGA WATER SECURITY PROJECT (PHASE 2) – HIPPO WATER ROLLER BENEFICIARIES

This map shows the location of the homesteads that have received the first 25 Hippo Water Rollers to be distributed.



A COLLABORATION BETWEEN



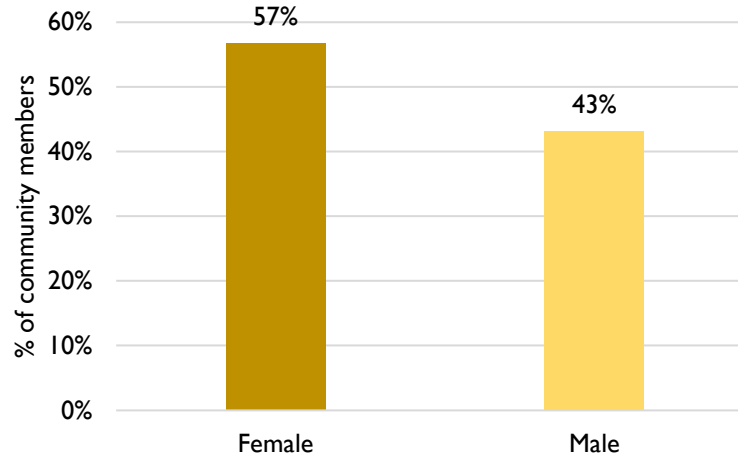
EMPOWERING COMMUNITIES
ENABLING CONSERVATION



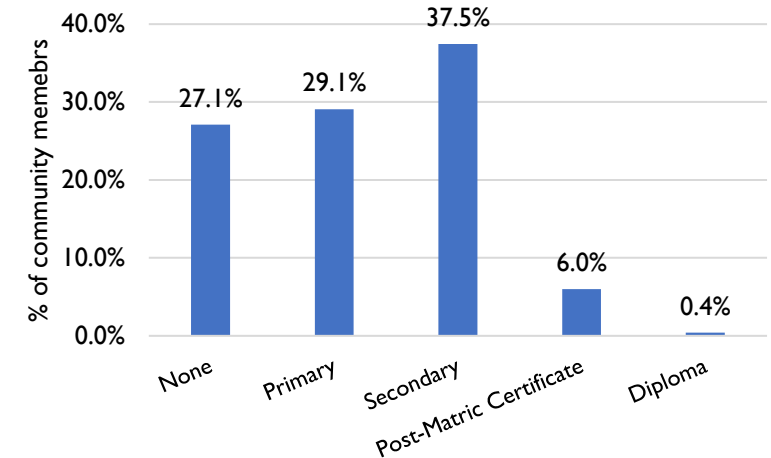
TSUTSUBEGA WATER SECURITY PROJECT (PHASE 2) – HIPPO WATER ROLLER BENEFICIARIES

- There are 301 community members linked to the 25 homesteads that received Hippo Water Roller.
- Only 35% of these community members live permanently in the community.
- The average household size is 12, with 52% of beneficiaries under the age of 18.
- 27% have no form of education and only 6% have a post-schooling qualification.
- 84% actively farm, with an average farm size of 4.1 ha, and irrigate biweekly.

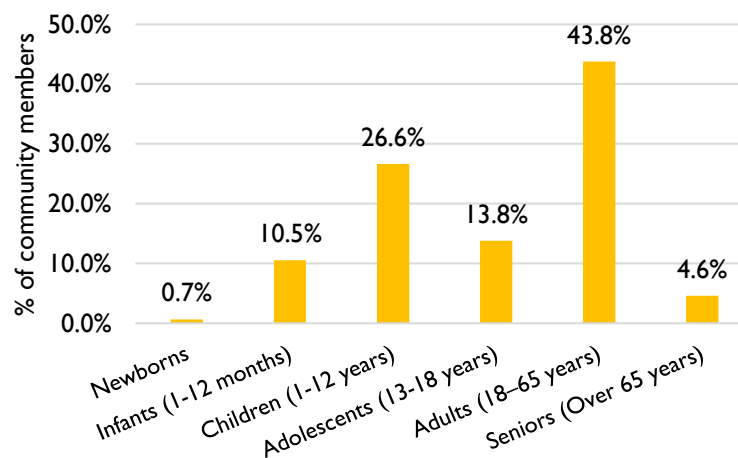
Gender profile (25 households / 301 pax)



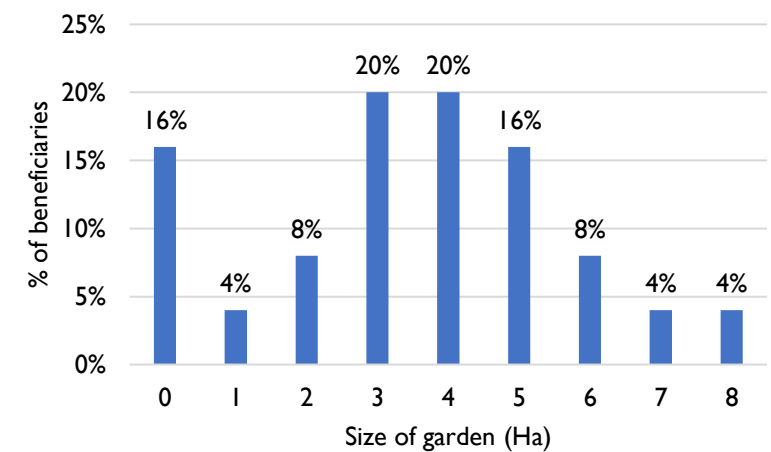
Education Profile (301 pax)



Age Profile (301 pax)



Farm size (4.1 ha average)



TSUTSUBEGA WATER SECURITY PROJECT (PHASE 2) - TESTIMONIAL

“...We have tried to make our own boreholes but they always dried after a few months.

We now use the water from the boreholes to bath, cooking and wash our clothes.

Our livestock do not have to go far looking for water, Africa Foundation has brought water to our door steps.

I just want to say thank you to &Beyond and Africa Foundation for your efforts”

Ogaisamang Motswadi
Tsutsubega Resident
49 years old



Ms Ogaisamang Motswadi
Age: 49 years old
Community: Tsutsubega

Africa Foundation boreholes have saved our lives. We have a trust Fund but it does not help us ~~the~~ as much as AF has helped us. ~~The~~ This boreholes does not only help us but also help neighbouring communities. We have tried to make our own boreholes but they always dried after a few months. We use water from the boreholes to bath, cooking, wash our clothes, ^{Our} and livestock are now protected from animals as they ~~the~~ don't go far looking for water, AF brought water to our door steps. I just want to thank s' beyond and Africa Foundation for their efforts ~~ex~~ and for changing our lives.

A COLLABORATION BETWEEN



AFRICA
FOUNDATION



B&BEYOND

30
YEARS

EMPOWERING COMMUNITIES
ENABLING CONSERVATION



FUTURE
FOUNDATIONS

TSUTSUBEGA WATER SECURITY PROJECT (PHASE 2) - TESTIMONIAL

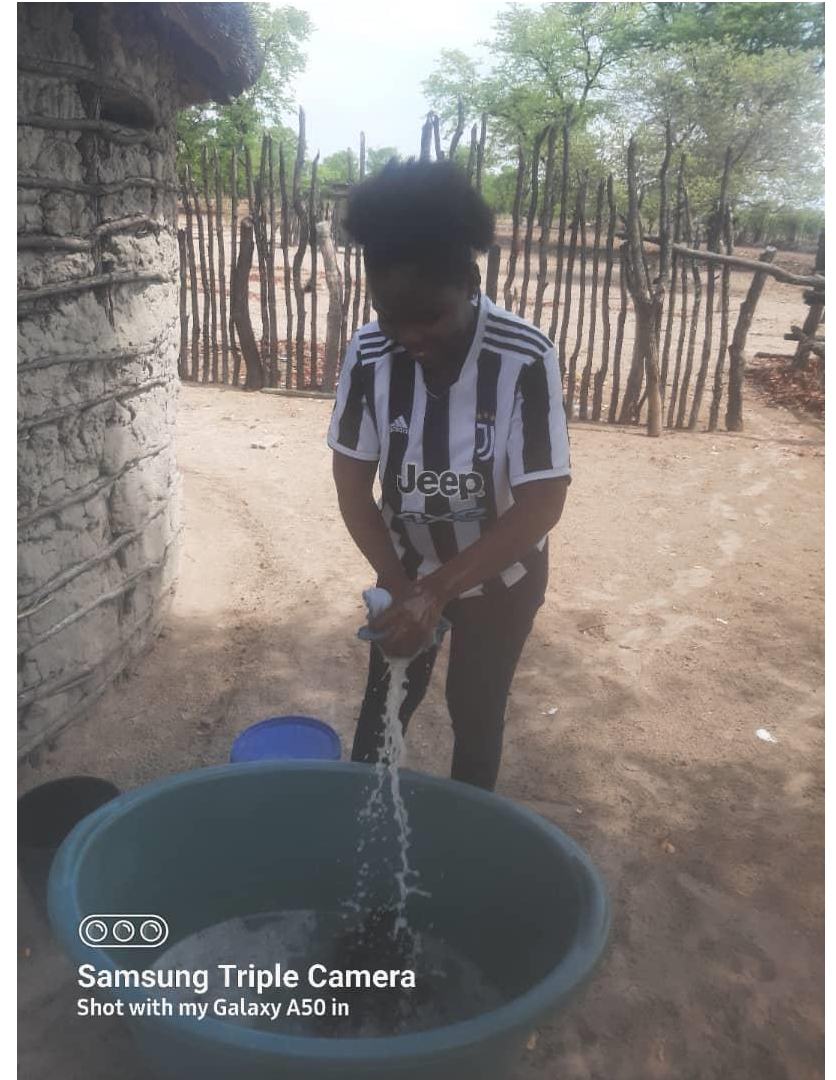
“I just want to say thank you to everyone involved in the project. You have changed my family’s life and saved the lives of our livestock.

We used to have to hire people to collect some water for us as a family if one of ours couldn’t make it. Now with the boreholes and Hippo Water Rollers we are able to collect our own water.

This has changed our lives a lot and we are able to save some money and use the money towards other expenses in the household.

Thank you to Africa Foundation, &Beyond and all the donors. My family is really grateful”

Bahedile Rombe
Tsutsubega Resident
30years old



A COLLABORATION BETWEEN



30
YEARS

EMPOWERING COMMUNITIES
ENABLING CONSERVATION



TSUTSUBEGA WATER SECURITY PROJECT (PHASE 2) - TESTIMONIAL

“We are appreciative of your assistance with the water. We used to be highly dependent on rainfall and the river.

We can now cook, take baths, and drink clean water because we have access to a nearby water source.

Our cattle no longer need to graze too far and may be brought to a local water source. This has helped us in keeping predators from preying on our cattle.

With the water, we can also build mud houses, which greatly improve our housing. I am really grateful for this chance and for having access to water.”

Thatoyaone Motswadi

Tsutsubega Resident

32 years old



A COLLABORATION BETWEEN



30
YEARS

EMPOWERING COMMUNITIES
ENABLING CONSERVATION



TSUTSUBEGA WATER SECURITY PROJECT (PHASE 2) - TESTIMONIAL

“My name is Ntshiang Kedumetse from Tsutsubega. Growing up, we depended a lot on river water for survival, and during the dry seasons when the rivers dried up, we suffered a lot and had to walk very far distances to get water, which wouldn’t last us long, so we ended up travelling many distances day apart. The boreholes and the hippo water rollers, has provided us a very important necessity in our lives.

As a community we are grateful, that our livestock also have access to water, and we are able to do many things with the easy access of water, like build our houses.

Thanks Africa Foundation, &Beyond and all the donors we are forever grateful.”

Ntshiang Kedumetse
Tsutsubega Resident
46 years old



A COLLABORATION BETWEEN



AFRICA
FOUNDATION



B&BEYOND

30
YEARS

EMPOWERING COMMUNITIES
ENABLING CONSERVATION



3 GOOD HEALTH
AND WELL-BEING



4 QUALITY
EDUCATION



FUTURE
FOUNDATIONS

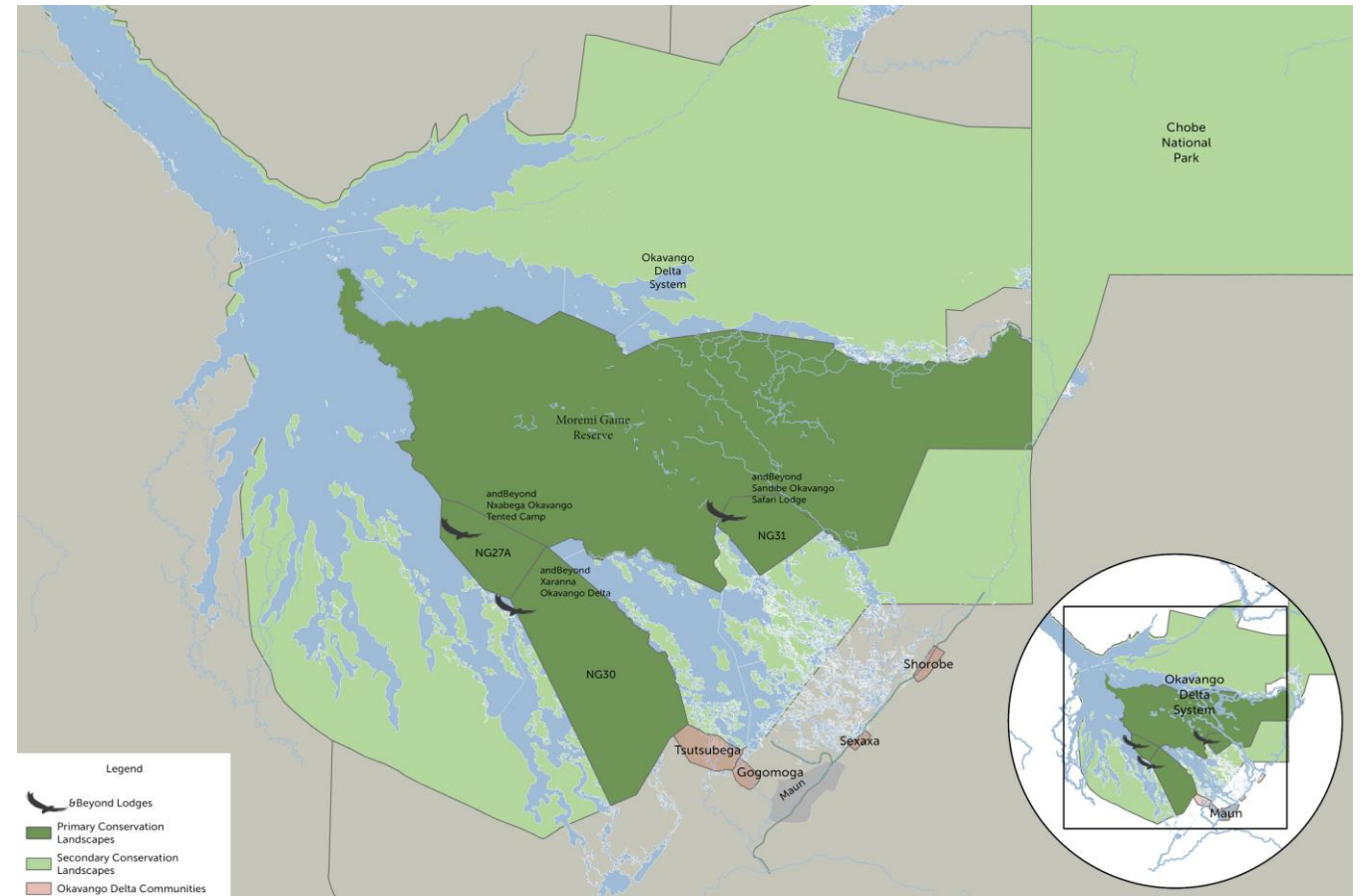
TSUTSUBEGA WATER SECURITY PROJECT (PHASE 2) - GEOGRAPHICAL CONTEXT

Botswana is a land-locked country with a population of 2.2 million people. It is one of the most sparsely populated countries in the world, with a significant portion of the land being the Kalahari Desert. One third of the population live in rural areas.

Since its independence in 1966, Botswana has maintained one of the world's highest economic growth rates, achieved through fiscal discipline and sound management of its valuable natural resources – primarily diamonds. Botswana has also benefited economically from cattle and tourism, making it a relatively prosperous African country.

Despite the positive economic outlook however, unemployment rates are high, rural poverty is prevalent and the country has the world's second highest rates of HIV/AIDS.

Botswana also faces major drought problems, with three quarters of the country's human and animal populations dependent on groundwater and less than 5% of agriculture sustained by rainfall.



A COLLABORATION BETWEEN



EMPOWERING COMMUNITIES
ENABLING CONSERVATION

