



**South Africa – Maputaland**  
**Sicelokuhle Creche Double Classroom, Fencing and Play Area**  
**Final Report - February 2024**

A COLLABORATION BETWEEN



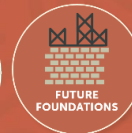
## SICELOKUHLE CRECHE – GEOGRAPHIC CONTEXT - KWANGWENYA

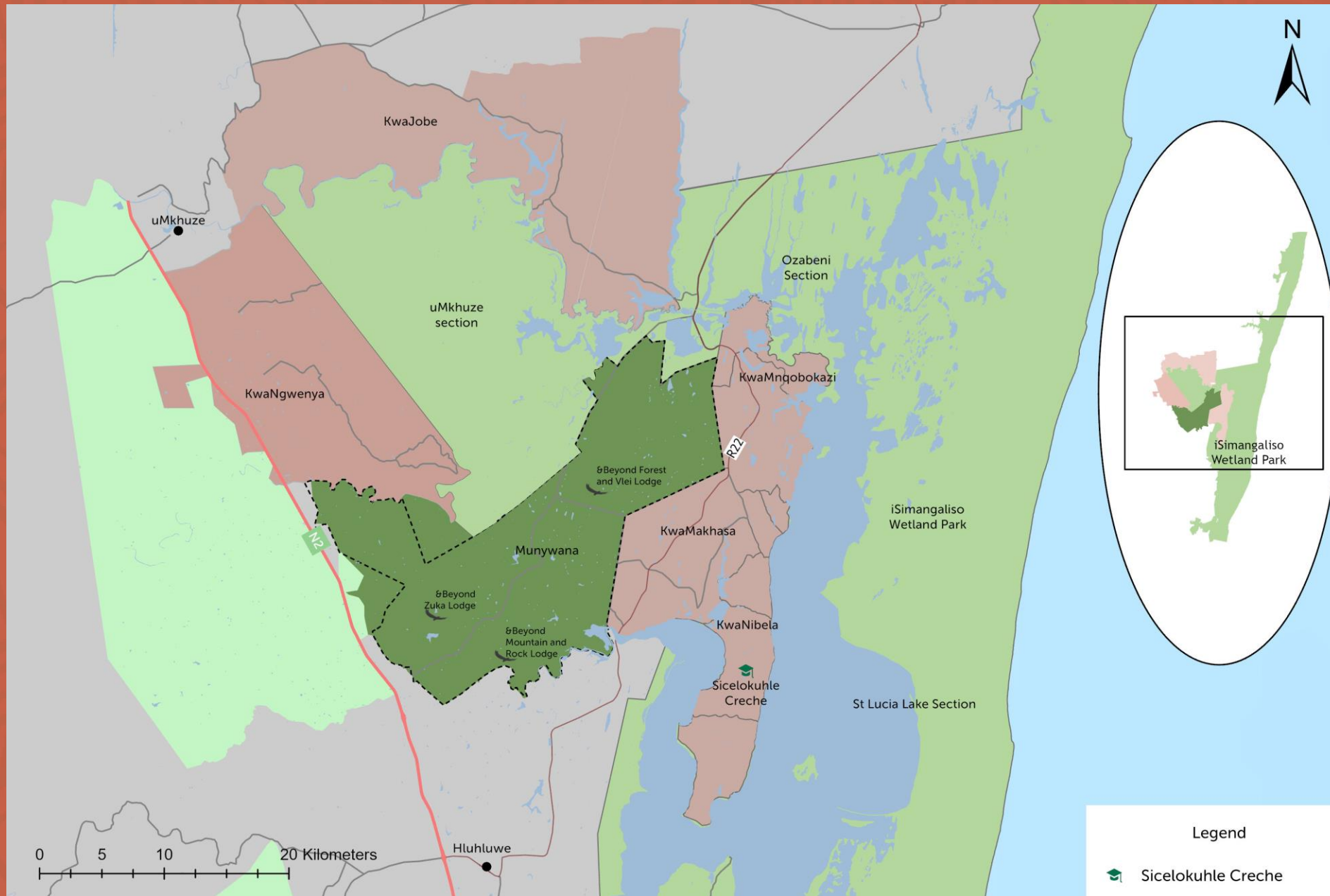
The KwaNgwenya community is situated adjacent to the Munywana Conservancy and the Lake St Lucia section of the **iSimangaliso World Heritage Site**, in KwaZulu-Natal (KZN) province, South Africa. KZN which is home to 19.9% of South Africa's population, making it the second most densely-populated province, after Gauteng. There are 10 District Municipalities in KZN and the KwaNgwenya community falls within the second largest of these Districts – the uMkhanyakude District, in the Big 5 Local Municipality, which is very poorly resourced. The Big 5 Municipality provides limited water, sewage or sanitation infrastructure to residents, and less than 10% of households have electricity. Formal employment rates are extremely low, with male adults of working age often moving to larger cities and towns in search of employment opportunities. As a result, most homes in the community are female headed.

Africa Foundation and &Beyond have a long-standing partnership with the KwaNgwenya community, having supported sustainable development and conservation projects for nearly 25 years. Over the years, our work has focused on:

- Supporting efforts to address and mitigate human wildlife conflict issues.
- Improving access to Primary Health Care, Early Childhood Development, Primary and Secondary Education
- Improving access to potable water, including the establishment of boreholes, water tanks and the provision of hippo water rollers.
- Providing tertiary level bursaries for local school leavers.
- Facilitating school-based environmental education lessons and activities through our "Echo" program,
- Facilitating creche based food gardens through our "Climate Resilient Communities" program, and
- Supporting the development of the local micro-entrepreneurs through our "Hustle Economy" program.

A COLLABORATION BETWEEN





**Legend**

- Sichelokuhle Creche

# KWANGWENYA COMMUNITY CONTEXT WITHIN THE MAPUTALAND CONSERVATION

## LANDSCAPE

A COLLABORATION BETWEEN



## SICELOKUHLE CRECHE - BACKGROUND

**Sicelokuhle Creche** was established in 2001 by a group of local women who were members of a community vegetable garden group. These ladies led the process of setting up an Early Childhood Development (ECD) Centre and registering it as a non-profit organization (NPO) – Sicelokuhle Creche.

The creche not only provides critical access to early childhood education for children, but it also is a safe and caring environment for young children who would in some instances be left to fend for themselves when their caregivers have to go out to earn a living.

Prior to the projects included in this report, Africa Foundation and &Beyond, had supported the creche through the installation of a borehole, construction of a block of 5 Envirolloos (toilets), as well as providing masks, sanitizer and food during the COVID-19 pandemic.



A COLLABORATION BETWEEN



AFRICA  
FOUNDATION



&BEYOND

4  
QUALITY  
EDUCATION



FUTURE  
FOUNDATIONS

## SICELOKUHLE CRECHE – BACKGROUND

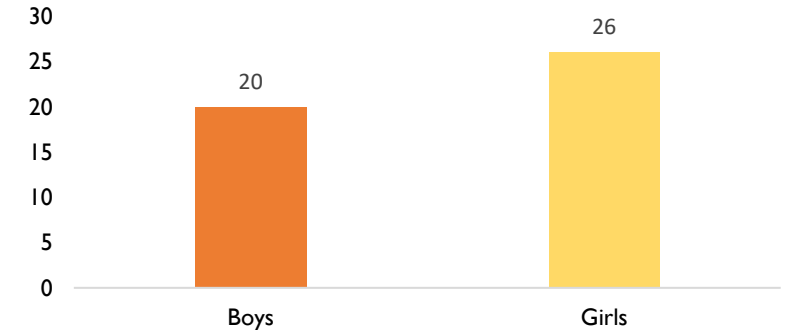
The creche currently has 46 children (26 girls and 20 boys) enrolled. They are supported by 6 staff members, 2 educators, a cook, a cleaner, a gardener and a security guard. There are currently 2 classes – each with 23 children per class.

The Sichelokuhle Creche's Governing Committee and the KwaNgwenya community leadership have requested Africa Foundation and &Beyond support for improving the Creche infrastructure, in-line with the Department of Social Development guidelines.

Through the incredibly generous support of several Africa Foundation USA donors, funding has been secured for:

- Fencing to improve learner safety (R 145 433),
- Playground equipment to improve scholar physical stimulation and learning (R 67 712),
- A new Double Classroom block (R 717,276) that will significantly improve the scholar learning environment and meet the DSD guidelines for desired indoor square meterage per child.

Scholar gender profile ( 46 Total )



## SICELOKUHLE CRECHE – FENCING PROJECT

The fencing contract was initiated on 21 August 2023, with an initial focus on removing the old fence and installing new fence posts, as well as a new gate. The project was successfully completed on 23 August 2023.



A COLLABORATION BETWEEN



AFRICA  
FOUNDATION



BEYOND



## SICELOKUHLE CRECHE – PLAYGROUND PROJECT

The establishment of a fully-equipped playground area was undertaken in August and September 2023, and is a welcome addition to the creche, as demonstrated by the happy faces in these photos.



A COLLABORATION BETWEEN



AFRICA  
FOUNDATION



BEYOND

4 QUALITY  
EDUCATION



FUTURE  
FOUNDATIONS

# SICELOKUHLE CRECHE – PLAYGROUND PROJECT



A COLLABORATION BETWEEN



AFRICA  
FOUNDATION



6 BEYOND

4 QUALITY  
EDUCATION





## SICELOKUHLE CRECHE – DOUBLE CLASSROOM PROJECT

Construction of the double classroom started towards end of August 2023 and was completed by December 2023.



A COLLABORATION BETWEEN



# SICELOKUHLE CRECHE – DOUBLE CLASSROOM PROJECT



A COLLABORATION BETWEEN



# SICELOKUHLE CRECHE – DOUBLE CLASSROOM PROJECT



A COLLABORATION BETWEEN



AFRICA  
FOUNDATION



6 BEYOND

4 QUALITY  
EDUCATION



FUTURE  
FOUNDATIONS

## SICELOKUHLE CRECHE – IMPACT

The critical importance of a well-structured and stimulating early childhood education is now well recognized, directly impacting intellectual, social, physical, and emotional development. It is also clear that children's physical environment have an impact on how they connect with others, how they develop, and how they experience life as adults.

The new classroom and playground now provides the Sichelokuhle learners with a conducive and safe learning environment, allowing them to develop intellectually and physically, and helping them to be adequately prepared for entering their formal schooling in grade I.

The fencing and gate have significantly improved the security, especially when compared to the open space that was the historic reality. This now provides the parents with a lot more comfort that the safety of their children is a priority for the creche.

The structural improvements on the creche also encourage and motivate the teachers to improve their teaching and care of the scholars during this critical phase of their lives.



A COLLABORATION BETWEEN



AFRICA  
FOUNDATION



B BEYOND

4 QUALITY  
EDUCATION



FUTURE  
FOUNDATIONS

## SICELOKUHLE CRECHE – TESTIMONIALS

“On behalf of the Sichelokuhle creche we would like to thank Africa Foundation for the donations that have helped improve our creche.

Because of your donations we were able to construct additional classrooms for the children that has enough space for them to all receive proper attention and learn more productively.

We would love to thank AF and its donors, for not only helping us but changing the lives of our learners and giving them a great place to start their educational journey.”

**Mrs Myeni**  
**Teacher**

P.O Box 90  
Mkhuzo  
3965  
30 January 2024

AFRICA Foundation Trust  
P.O Box 784826  
Sandton  
2146

Dear Sir /madam

Application For Thank For donation

On behalf of Sichelokuhle creche I would like to thank your Africa Foundation for donation our creche

We are extremely thankful for support with will be helpful in constructing additional classrooms for our children are very happy with nice class they are enough space for children

We would again like to extend a warm thank you to your company for helping us and our learners

Yours Faithfully  
F.C. MYENI



## SICELOKUHLE CRECHE – TESTIMONIALS

On behalf of the teachers at our school, we would love to thank Africa Foundation for the donations our school has received. We are thankful for the outside play area because it has helped develop social skills between the learners and helped strengthen their communication with each other.

We would like to extend a very warm thank you once again to Africa Foundation and its donors for helping us provide a space where learners can play and grow together in friendship and education.

**Miss Gumede**  
**Teacher**

P.O. Box 90  
MKUZU  
3965  
30 January 2024

Africa Foundation Trust  
P.O. Box 784826  
Sandton  
2146

Dear: Sir / Madam

Application letter for thank for donation

On behalf of teacher, I would like to thank your African Foundation for donating our school

I'm very happy with all things that you did in our school, thank you for your support which will be helpful in our side playing area, it to help learners to developed easy and communicate to others.

We would again like to extend a warm thank you to you company for helping us and our learners

Yours faith fully  
P.N Gumede-

